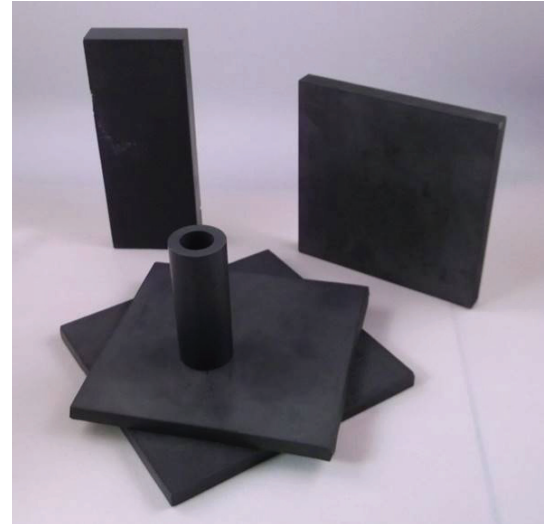


# Superduride Standard & Superduride Plus

## Lightweight Ceramic - Ceramic Composites

### Sinterable ultrahard ceramic composite

- Boron Carbide based ceramic composites – ultra hard and lightweight for applications where weight and performance are critical
- High Boron Carbide content for exceptional hardness
- Toughening by crack deflection significantly improves the toughness
- Consolidation by pressureless sintering – economical process with ability to form complex shapes
- High electrical conductivity makes the material suitable for Electric Discharge Machining – very complex shapes possible

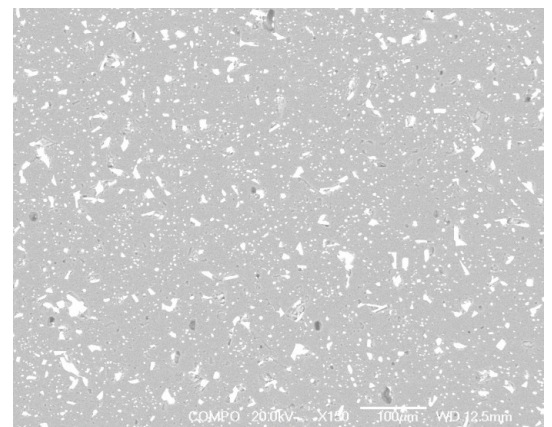
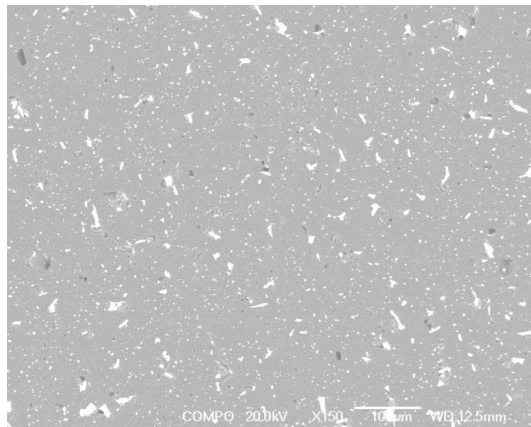


#### Superduride Standard

Density= 2.49 g/cm<sup>3</sup>  
 Hardness HV<sub>0.5</sub>=35 GPa  
 Toughness K<sub>IC</sub>=3.5 MPa/m<sup>2</sup>  
 \*K<sub>IC</sub> toughness as measured by the Indentation method

#### Superduride Plus

Density= 2.53 g/cm<sup>3</sup>  
 Hardness HV<sub>0.5</sub>=39 GPa  
 Toughness K<sub>IC</sub>= 4 MPa/m<sup>2</sup>  
 \*K<sub>IC</sub> toughness as measured by the Indentation method



#### PRECISION CERAMICS

86 Lower Tower Street, Birmingham B19 3PA, England  
 Tel: +44 (0) 121 687 5858 Fax: +44 (0) 121 687 5857  
 Email: [info@precision-ceramics.co.uk](mailto:info@precision-ceramics.co.uk)  
[www.precision-ceramics.co.uk](http://www.precision-ceramics.co.uk)