

DuraWear

Lightweight Ceramic - Ceramic Composites

Hard ceramic composites for abrasive wear protection

- Boron Carbide based composite ceramics – high intrinsic hardness for applications where abrasive wear is an issue
- High Boron Carbide content for increased hardness and wear protection
- Lightweight for applications where reduced weight is important
- Consolidation by pressureless sintering – economical process with ability to form complex shapes
- Further densification possible without changing the material characteristics

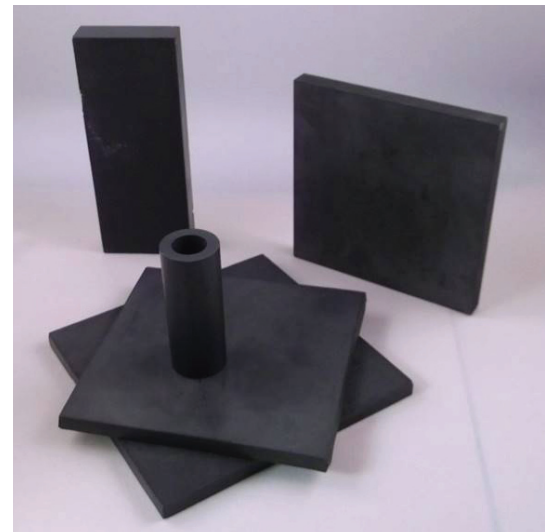
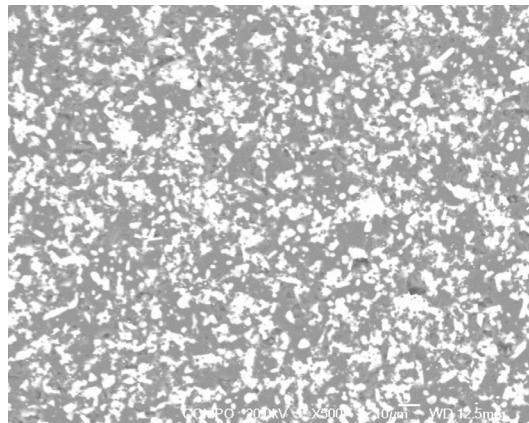
DuraWear

Density = 2.62g/cm³

Hardness HV_{0.5}=31GPa

Toughness K_{IC}=3.4 MPa/m²

*K_{IC} toughness as measured by the Indentation method



PRECISION CERAMICS

86 Lower Tower Street, Birmingham B19 3PA, England

Tel: +44 (0) 121 687 5858 Fax: +44 (0) 121 687 5857

Email: info@precision-ceramics.co.uk

www.precision-ceramics.co.uk