

DuraShock

Lightweight Ceramic - Ceramic Composites

Tough and hard ceramic composites for application where moderate mechanical shocks are present

- Boron Carbide based ceramic composite – high hardness and improved toughness for applications where a high hardness and impact resistance is required
- Improved impact behaviour
- Lightweight for applications where Silicon Carbide is too heavy
- Consolidation by pressureless sintering – economical process with ability to form complex shapes
- Further densification possible without changing the material characteristics

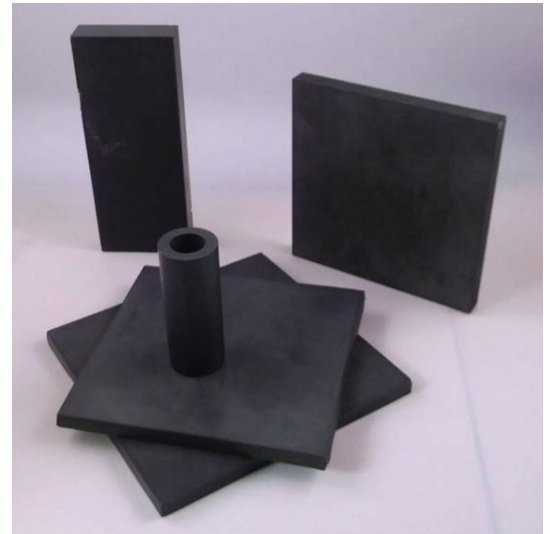
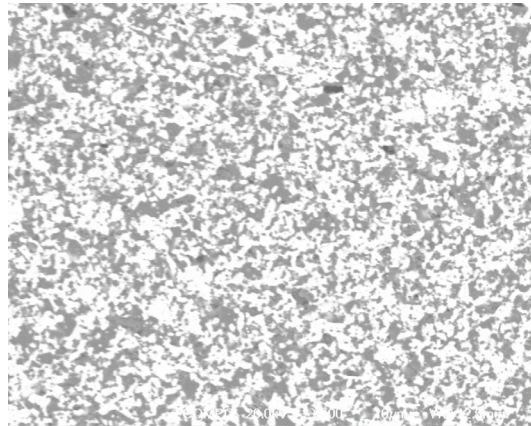
DuraShock

Density = 2.75 g/cm³

Hardness HV_{0.05}=28 GPa

Toughness K_{IC}= 4 MPa/m²

*K_{IC} toughness as measured by the Indentation method



PRECISION CERAMICS

86 Lower Tower Street, Birmingham B19 3PA, England

Tel: +44 (0) 121 687 5858 Fax: +44 (0) 121 687 5857

Email: info@precision-ceramics.co.uk

www.precision-ceramics.co.uk